



Metal Fabrication
Machines

Robotics Welding
Equipment

PRODUCT OVERVIEW



Tampa Technology Center



Atlanta Technology Center

Our Showrooms

Coming soon to the Northeast: our Technology Showroom—hands-on demos of more press brakes, lasers, and robotic welding cells running under power than anywhere else. In our Technology Showrooms, you can see more metal fabrication machines and robotic welding machines under power than anywhere else. Our unmatched reputation for service before, during and especially after the sale is the reason why more companies choose the Capital Group than any other machine tool distributor. We urge you to browse through our pages and check out our product lines.

Service Coverage Area

The Capital Group's service coverage is unequalled in the industry. To ensure that we are able to provide the fastest possible response times, Capital maintains a fleet of service trucks, each strategically located to serve our customers as efficiently as possible.

Each service call is treated with the same priority. Whether the machine is in or out of warranty, the Capital Group is committed to a **First Call Fix**—mobilizing our team to resolve issues quickly and correctly on the first visit. And to help prevent unplanned downtime altogether, our **Capital Care™ Preventive Maintenance (PM)** program provides scheduled inspections, calibration, and proactive parts replacement tailored to your equipment and production schedule.

Your Trusted Source for Metal Fabrication & Robotic Welding Equipment

SERVING OUR CUSTOMERS



Dallas Technology Center



Modern Machinery Center



Expanding Reach



Allowing us to enhance metal fabrication solutions and deepen our commitment to customer success—now including our new **Northeast territory**. The combined strengths of Capital Machine Technologies and Modern Machinery enable the newly formed entity to offer a comprehensive range of cutting-edge solutions and support to meet the evolving needs of the industry and our customers across the Northeast and beyond.



OPTIPLEX NEO 3015/4220



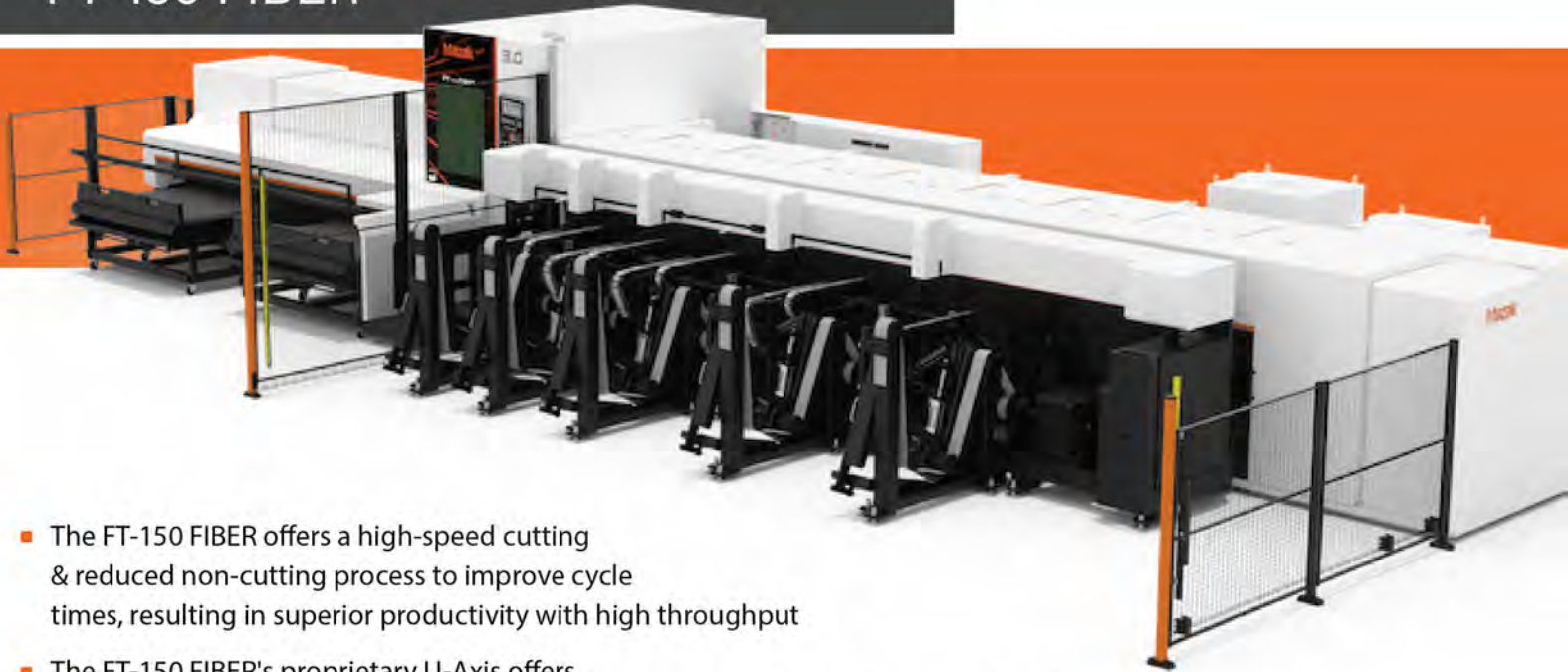
- Available in powers ranging from 4kW to 20kW and in both 3015 and 4220 format
- The OPTIPLEX NEO is equipped with technology that allows increased control of beam shape and beam diameter
- The machine automatically adjusts beam diameter to optimally cut various materials and beam shape to control the concentration and power density of the laser beam (resulting in improved cut speed & cut quality)
- Equipped with a Nozzle Changer, Nozzle Centering Camera, Camera Assisted Part Nesting, and many other Intelligent Functions



OPTIPLEX Ez

- Affordable laser processing solution ideal for entry-level users designed for high cutting performance for thin to medium material thicknesses
- Available in 4kW and 6kW power levels in both 3015 and 4220 format
- Built on same rock solid castings as our workhorse NEO machines with same control technology

FT-150 FIBER



- The FT-150 FIBER offers a high-speed cutting & reduced non-cutting process to improve cycle times, resulting in superior productivity with high throughput
- The FT-150 FIBER's proprietary U-Axis offers impressive cutting speeds and superior part accuracy through a wide range of applications
- The programmable angle of the B-Axis enables bevel cutting of the material thickness for improved welding, multi-tube assembly, fit, and finish

MAZATROL SMOOTH Lx



- Features a widescreen and touch panel for ease of operation.
- Rotating CNC display provides flexibility to work at the front or side of the machine.
- Intelligent functions support operators by ensuring optimal laser-cutting performance.
- Camera Assisted Part Nesting quickly and easily processes additional parts on demand.



Multiple Automation
Solutions Available



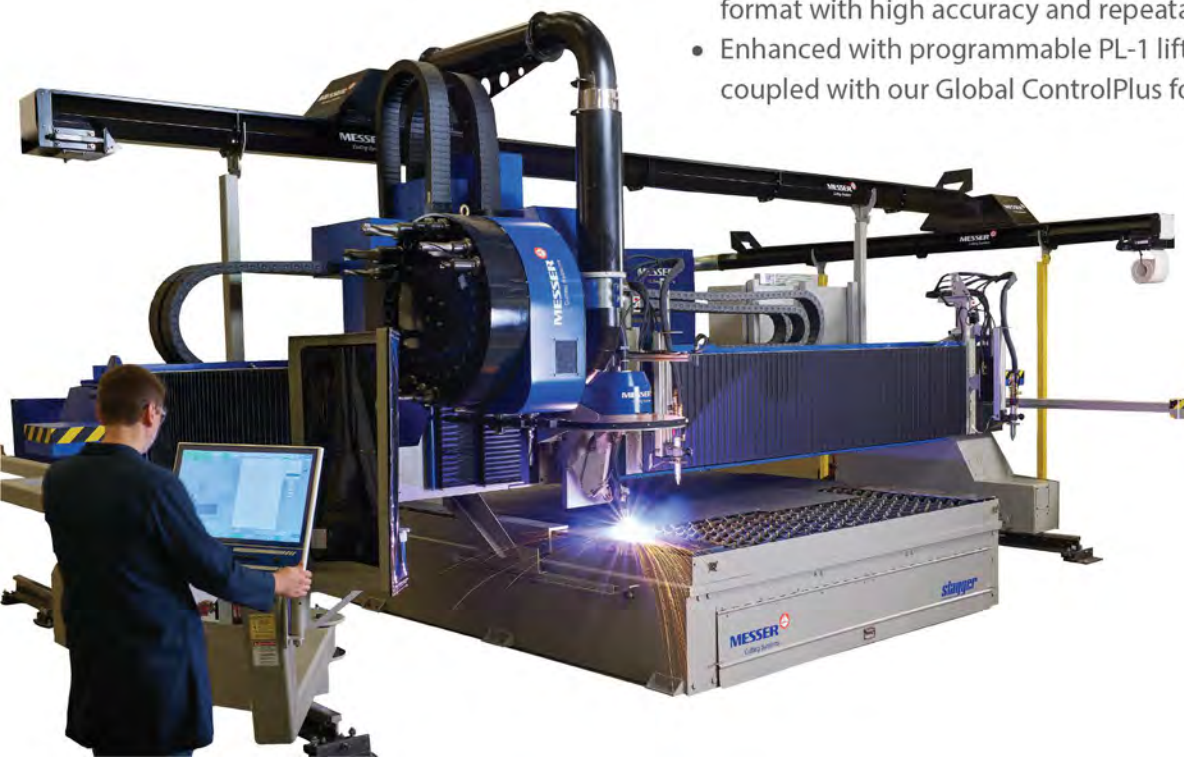
MetalMaster 3.0

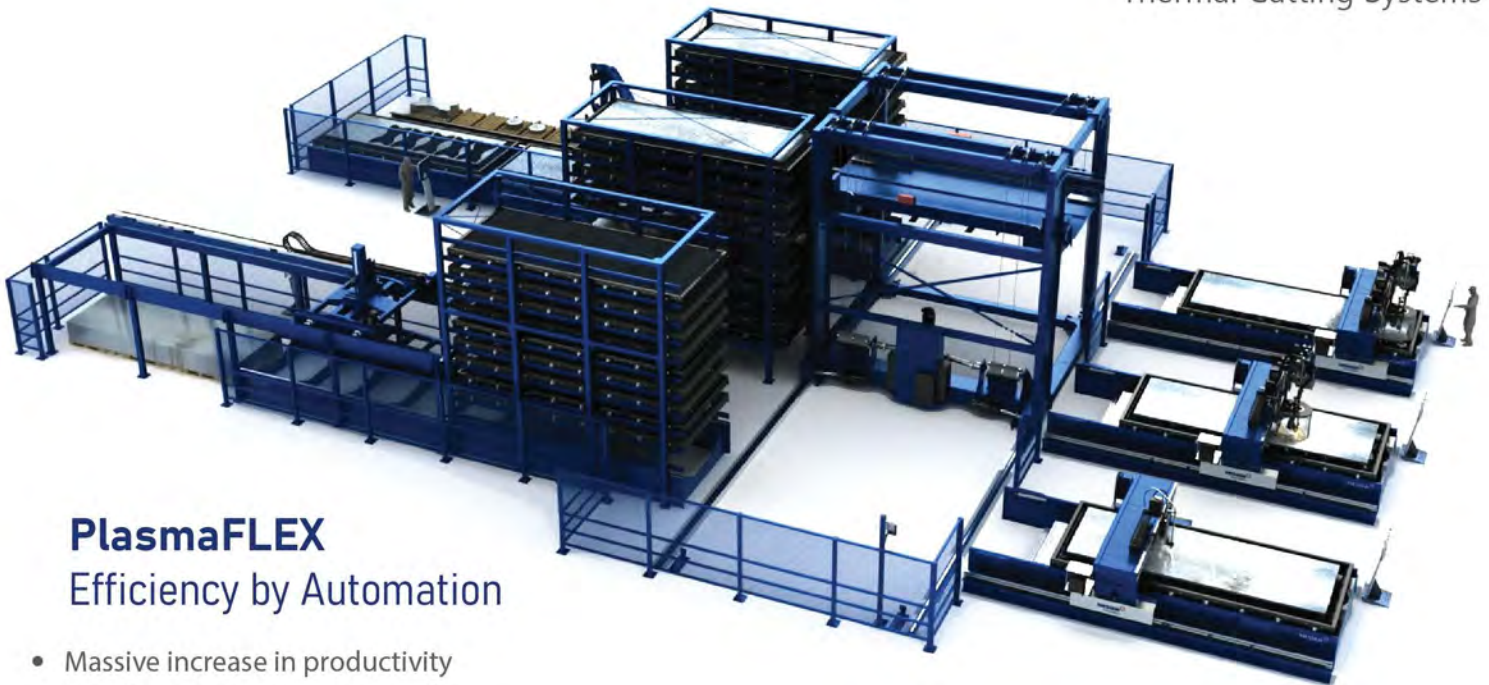
The new and improved low cost plasma and oxyfuel cutting machine.

- Cutting width 5', cutting length 10'.
- Ergonomically designed with stable table construction and integrated pull out buckets and smoke extraction.
- Highly accurate and reliable performance with positioning speeds of up to 114.83 feet (35 meters) per minute.
- Maximum working width with minimum space requirements.
- Twin-sided longitudinal rack and pinion drive.
- Fast and easy installation.
- Integrated guidance.

MPC2000 MC

- This a plasma machine with milling capability
- The New MPC2000 MC offers superior cut quality in a large gantry format with high accuracy and repeatability
- Enhanced with programmable PL-1 lifters, with powerful AC drives coupled with our Global ControlPlus for maximum production





PlasmaFLEX

Efficiency by Automation

- Massive increase in productivity
- Significant improvement in safety
- Plasma or Large Format Fiber Laser
- No dependence on crane or forklift and driver
- Load/Unload, Smart Crane, Tower Storage/Part Sorting
- Modular System which can easily be expanded for multiple machines

MetalMaster Evolution

Created to Revolutionize Plate Processing

- The MetalMaster Evolution® is a feature-rich plasma cutting machine, offering smooth edge quality, precise hole cutting, and high accuracy.
- With high-quality components and the strictest assembly and testing methods within the marketplace, the MetalMaster Evolution® will take your shop to the next level





MOST PRECISE WATERJET AVAILABLE

OPTIMAX 80X JetMachining Centers



- **IntelliMAX** premium software, designed for incredible ease of use and operation quickly following installation
- **IntelliVISOR** console with key metrics to optimize operations & monitoring that avoid unplanned downtime
- **EnduroMAX** pump that automatically sets the correct pressure and minimizes fluctuations to improve component life, while offering the most efficient waterjet pump technology in the market
- **IntelliTRAX** drive system with advanced motion control for increased system robustness and reliability. Virtually no maintenance required, compared to conventional ball screw or rack and pinion drive systems.
- New garnet delivery system to further minimize downtime

EnduroMAX Pump Technology

Available in 30, 40, 50 & 100 Horsepower

- Delivers 30% more horsepower to the cutting head compared to the intensifier design
- Variable Frequency Drive eliminates in-rush current peaks and maximizes operating Flexibility
- Lower maintenance, consumable and energy costs compared to intensifier technology



100 HP Option



- Taper compensating, 5-Axis cutting is driven by our patented Intelli-TRAX linear drive
- Our MAXIEM pump delivers proven performance and compatible accessories that can expand your abrasive waterjet capabilities
- The advanced Intelli-MAX standard software ensures all operators drive efficient cutting operations

Cutting Head & Accessory Technology



Tilt-A-Jet

The industry standard for abrasive waterjet taper compensation

Faster cutting of high precision taper free parts

Automatic taper elimination without any programming



Rotary Axis

Fully submersible 6-Axis rotary cutting

Features internal threads, flanges and locating shoulders

Opens up more design capabilities

No heat-affected zones when cutting metal materials



A-Jet

Cutting angle ranges from 0° to 60°

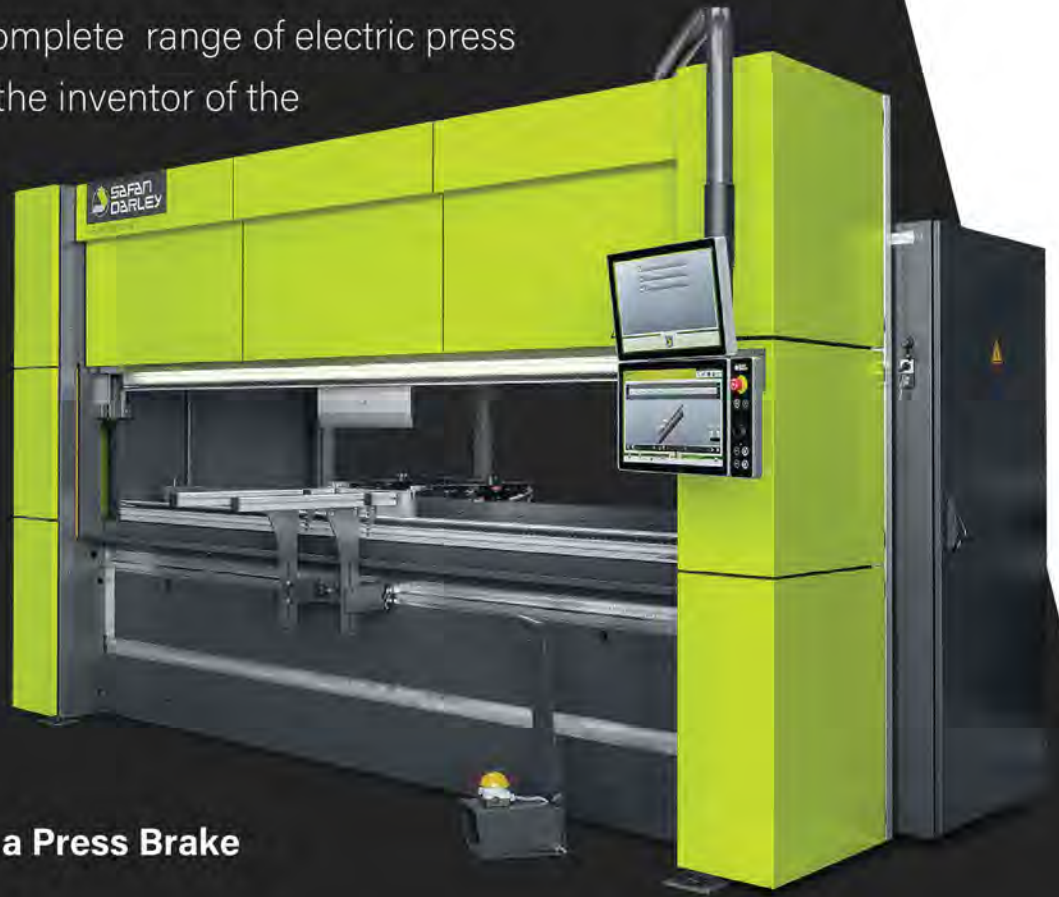
Features a fixed focal point design

Easily creates countersinks & weld-ready edges

Minimizes taper on finished parts



Safan offers the most complete range of electric press brakes in the world. As the inventor of the E-Brake, Safan electric press brakes come in different sizes and configurations with tonnages of **39 to 330 tons** & working lengths from **4' to 13'**



Everything You Want in a Press Brake

Fast

The Safan electric press brakes use a new generation of advanced electronics and software to start and stop the bending cycle. In fact, it stops so fast, it can enter a speed change 1mm above the material. It's like flipping a light switch.

Safe

Unlike other press brakes Safan electric press brakes are designed from the beginning with safety in mind. All Safan electric press brakes feature a light guard that is integrated into the controls. No aftermarket or third party safety systems are needed. In addition, the Safan E-Brake has an additional built-in safety provision. The application of a spring return means that the top beam will always move upwards in the event of a mechanical failure.

Accurate

The Safan E-Brake is built on an "O" frame design that acts as a single unit keeping deformation to an absolute minimum. It is more stable, stronger and produces less deformation than conventional "C" frame press brakes. The Safan E-Brake was designed with accuracy in mind. The unique, patented roller drive system in the upper beam ensures a uniform and even distribution of forces across the length of the ram. This ensures consistency across your bends.



E-Brake 35-1250 Ergonomic

- Fastest press brake available in any press brake category
- Ergonomic package complete with front table & chair
- Capable of being run without the use of a foot pedal to increase production via Safan's Intergrated Light Curtains

H-iBrake 125-560T

- Up to 30% more efficient
- Low oil volume
- Hybrid drive system



Automated Mini Cell

- Customized to Your application
- Auto stack calculation
- Small footprint
- Tool changing
- Easy offline



H-Brake Tandem

- The most functional and intuitive Man-Machine interface
- Up to 50% energy savings
- Noiseless operation



Wilson Tool provides a wide range of tool solutions for Bending, Punching and Stamping customers around the globe. We are best known for more than 57 years of customized tooling solutions designed to help customers resolve their most challenging fabrication issues.



PRESS BRAKE DIES, INC.

**Planer Made &
Specialty Tooling**



Precision Quick Change Tooling



THE PRESS BRAKE PRODUCTIVITY PEOPLE

- New Standard and American Style Upper and Lower Tooling available in Standard sizes
- Precision Upper Hydraulic Tooling Clamping Systems
- CNC Crowning Systems



SCHRÖDER GROUP

MAK4 EVO with ATC



- 100" x 0.312", 127.5" x 1/4", 159" x 0.196, and 198" x 9 gauge capacities
- Bi-directional folding
- Automatic Tool Change (ATC)
- 15.7" tall clamping beam tools
- Gooseneck folding blade tools
- Optional Automatic Handling System (AHS) rotate and gauge parts completely for fully automated bending
- CNC Crowning
- 3D graphic control system
- Up to 20" deep 4-sided box

PowerBend Professional & Industrial



- 127.5" x 11 ga or 1/4", and 159" x 12 ga or 0.196" capacities
- Bi-directional folding
- Semi-Automatic vacuum gauge system
- Up to 11.8" tall clamping beam tools
- Tool positioning lights
- CNC Crowning



- Unique robustness, reliability and repeat accuracy
- Production of single pieces and prototypes
- Patented, hydraulic Up-and-Down system
- Clamping beam stroke of 650 mm
- Tool positioning display alongside the clamping beam
- Bilateral drives on the clamping and the folding beam achieve extremely fast clamping and folding speeds
- Two touch-panels for easy operation from the front and the rear side of the machine.



MAV – 3 Roll Variable Axis Bending Machine

- Plate roll series designed to bend thick plates to very tight diameters
- The most versatile design for mid-heavy to super-heavy plates
- Three powered rolls (standard) with three independent hydraulic gearboxes
- Optimizable roll adjustment for any bending application
- Independent adjustment of all three rolls providing exceptional tilting capacity and capabilities
- Hot Rolling feature capable to increase the useful capacity range



MCA & MCB – 4 Roll Bending Machines

- Full automation and material handling are optional for both models
- Flat plate can be squared, gauged and rolled into a finished part in one handling
- The CNC control greatly increases productivity and requires less operator input
- CNC controls, side supports, overhead supports and other accessories available to increase productivity



e-POWER

The first complete line of **full electric** plate rolls

Increased Productivity



Compact Design
Reduced Maintenance

Unrivalled Precision

MCP – Angle and Section Bending Machine

- Universal rolls as standard equipment, able to bend the most common sections
- Allows the use of most of the existing Roundo tooling (due to the same shafts dimensions)
- In-House Engineering Department able to provide custom solutions on request
- Three powered rolls (standard) with three independent hydraulic gearboxes on all size machines
- Hydraulic guide rolls (standard) with independent 6-Axis hydraulic adjustment on all size machines



- Revolutionary CNC control capable of processing MULTI-PASS programs
- Powerful and intuitive programming tools turn complex tasks into simple routines
- High resolution 3D simulation of workpiece being manufactured by the rolling line
- Dedicated Troubleshooting and Maintenance Environment
- Dedicated reporting environment and full integration with plant network (MES)

Maximizes Rolling Productivity
with

EXTREME iRoll



EUROMAC XT

- Fully configurable, hydraulic, hybrid, electric, up to 66 tools
- Working area of 120" x 60" without repositioning
- Up to 1080 strokes per minute for nibbling 1 mm pitch
- Up to 460 strokes per minute for punching 20 mm pitch



MTX Plus

The new frame with an increase of dimensions enables the machine to operate with higher speeds thus ensuring greater stability and working precision.

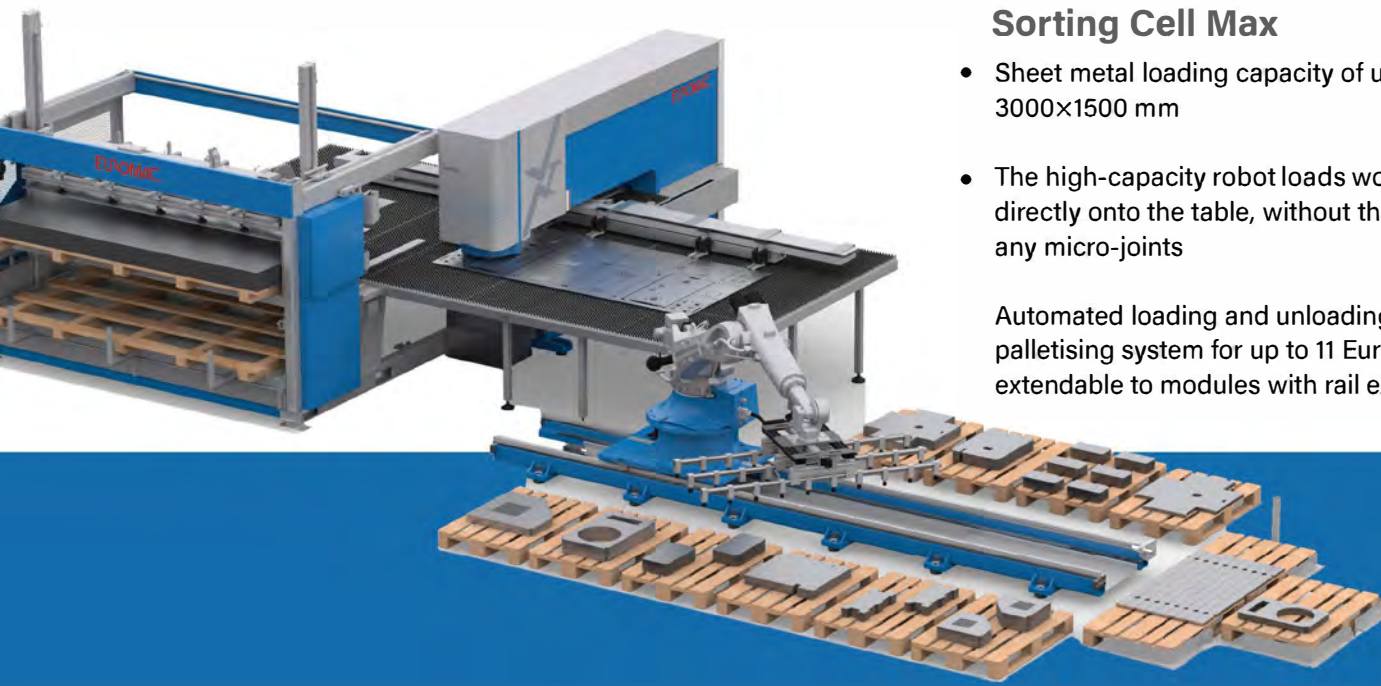


Euromac shearing machines, sheet metal cutting that is fast, precise and can save up to 20% in material.

Sorting Cell Max

- Sheet metal loading capacity of up to 3000x1500 mm
- The high-capacity robot loads workpieces directly onto the table, without the need for any micro-joints

Automated loading and unloading using a palletising system for up to 11 Euro-pallets, extendable to modules with rail extensions





S-Series



S-Series Versatile manual, semi-automatic, and fully automatic bandsaws w/mitering capabilities for general fabrication processing

M-Series Automatic mitring bandsaw up to 60 degrees w/large capacity for heavy fabrication and structural steel processing

V-Series Vertical saws capable of double mitring up to 60 degrees w/automatic mitring

H-Series double column bandsaws for high precision, high production, and for heavy solids, bar, and structural processing



V-Series



M-Series



H-Series



Unique Details Compared to the Competition

- ✦ Capital Robotics offers an array of pre-packaged cell configurations that are flexible
- ✦ The modular design allows the system to grow as your applications grow

Benefits of Investing in a Fusion Arc

- ✦ Common-base platform houses arm, welder, controller and peripheral items
- ✦ Optimizes work envelope for each robotic manipulator
- ✦ Fixture mounting options allow for high mix/low volume applications
- ✦ Most systems can be powered up within hours
- ✦ Allows for relocation without reprogramming



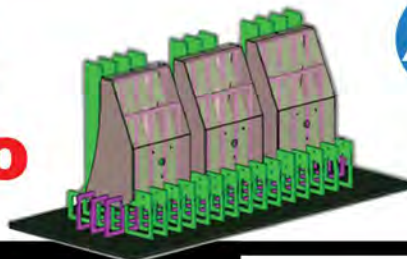


The Leading Provider of Robotic Welding Technology in the South



Our Robotics Technology & Training Centers are located in Atlanta, Georgia and Dallas, TX, providing experienced Welding Engineers, Applications Engineers, Service Engineers, robotic weld cells, on-site training classes, and an abundant inventory of robotic welding parts & consumables to the welding market.

In order to deliver world-class service, we have partnered with internationally recognized leaders of advanced welding and robotic systems such as:



YASKAWA



Automated Rapid Weld Fixture/Crating Design

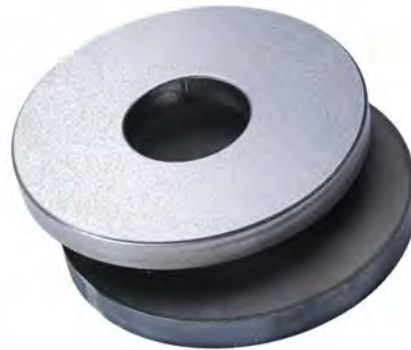
Nucleo Fixture creates an interlocked grid of X and Y fixture blades connected to a mating base plate from an imported solid CAD model. The top profile of each X or Y blade matches the underside of the component at the blade's insertion position, creating a "cradle" into which the component is located. Compared to traditional fixture costs, Nucleo Fixture results in enough overall savings to pay for itself within a small number of fixture runs.





Rotary Brush 32 & 42 Series

- Low tooling costs and very low energy consumption
- Single or Dual Drum and 4-8 Brushes depending on model
- For the removal of burrs on laser, waterjet and punched/formed products
- Preliminary removal of large burrs & finishing of surfaces in one pass
- Most Effective Edge Rounding Technology in the Industry



Hammerhead/Slag Grinders

- Hammerhead slag grinder now available in 37" & 52" widths
- Hammerhead machine is now available in four configurations
- Frequency controlled drive
- Eliminates grinding
- Reduces dust inhalation and carpal tunnel in employees





SERVING OUR CUSTOMERS



Whether the machine is in or out of warranty, the Capital Group is committed to a **First Call Fix**—mobilizing our team to resolve issues quickly and correctly on the first visit. And to help prevent unplanned downtime altogether, our **Capital Care™ Preventive Maintenance (PM)** program provides scheduled inspections, calibration, and proactive parts replacement tailored to your equipment and production schedule.



Strategically positioned throughout our territories we provide the best service possible in a timely manner. **Capital also incorporates a "First-Call-Fix" incentive program that maximizes efficiency of our entire service team.** With many of our members logging **over 15 years** in the field, you can rest assure your equipment will receive quality knowledge and workmanship to keep your business productive.





Working OX Capital



With more than a half-century of experience and innovation, we at Working Ox have made it our mission to help manufacturers get what they need to start and grow their businesses. Because we deal exclusively in machine tools and other manufacturing equipment, we understand your leasing and financing needs better than any bank.

Things to consider	Lease Financing	Cash Purchase	Bank Loan
Yearly reporting of tax returns, personal financial statements, time consuming reports and probing questions?	✗	✗	✓
Approval for financing in one day?	✓	✗	✗
Simple single page credit application only?*	✓	✗	✗
Match payments to current cash flow?	✓	✗	✗
Deduct all or most monthly payments from taxable income?	✓	✗	✗
Acquire equipment without a substantial outlay?	✓	✗	✗
Delay payments until after the equipment begins to pay off?	✓	✗	✗
Avoid affecting lines of credit?	✓	✗	✗
Meet vendor's progress payment requirements	✓	✗	✗
Easy trade-in of existing equipment for new technology or capacity?	✓	✗	✗

* Companies in business for a minimum of 5 years.

Why use **YOUR** money when you can have access to **OURS**?



NOTES:

[illegible]

CONTACT:

Northeast Territory

PH: 800-635-7777

FX: 813-626-0812

info@capitalmachine.com

sales@capitalmachine.com

capitalmachine.com



North America's Largest Distributor of Metal Fabrication & Robotic Welding Equipment